

Hope is built on story.



At a meeting a few weeks ago, a colleague—attempting to describe what makes Hope Community unique—said, “Hope is built on story.” Just a few words, but they say so much about our approach, which we call placekeeping.

A few years ago, a national movement for placemaking began. Placemaking is an approach that brings together artists, planners, and developers to make vibrant community spaces. While we appreciate these intentions, we wonder: What about the art that is already here? What about our existing culture? What about the people who already live here?

What about our story and the stories that came before us?

It’s true that Hope is built on story—and, in fact, every community is built on story. If we know anything it’s that we won’t erase those stories in an attempt to make something that seems better to outsiders. Hope’s work starts, and will always start, with the people who live, work, and play here now and throughout the history of this neighborhood. The art, culture, tradition, and relationships that live here layer on one another like bricks, binding together to create a strong foundation we can continue to build on.

The stories we know, collect, and have yet to discover inform a different kind of movement at Hope.

Placekeeping recognizes, amplifies, and leverages stories, practices, and collective assets already found within the community. It facilitates and supports community-centered visioning, decision-making, and action to increase community stability, vitality, resilience, equity, and power. It also reduces negative consequences of development, such as displacement and gentrification.

Throughout this annual report, you’ll read some of the stories that weave the fabric of this community of placekeepers. As you read, I want you to know that you are a part of this story too—the time, energy, and dollars you have invested here are a part of what makes this place and our work thrive. **You have a role in this story.**

With gratitude,



Shannon Smith Jones
Executive Director





Hope Community is thrilled to welcome two dynamic and visionary women as the new co-chairs of the Board of Directors.

Muna Abdirahman is a nurse with the Minneapolis VA Medical Center and is studying to receive her doctorate of nursing practice at Augsburg University. She came to Hope Community as a resident in 1998 and participated in many programs over the years, calling Hope Community her “village” growing up. Among her many professional credentials, Muna is a graduate of Hope’s SPEAC leadership and organizing training program. Muna has been on the board for seven years and is excited to step into a leadership role because it shows Hope’s commitment to growing leadership from within the community. “Being a woman of color and having a leadership role defies all stereotypes,” she says. “It gives hope to other people and kids who look like you. You offer that representation.”

LaCora Bradford-Kesti is a program officer for the Corporation for National and Community Service, the federal agency that funds the AmeriCorps VISTA and Senior Corps programs. LaCora is also a SPEAC graduate, which helped her surface her commitment to food justice work. Since then, she has been a leader in food, health, and community work at Hope and beyond. Hope staff nominated LaCora to serve as a fellow with the Boards and Commissions Leadership Institute at Nexus Community Partners, which prepared her for her new leadership position at Hope. LaCora is enthusiastic about the potential for change as she steps into this new role. “I want to pour into other folks,” she says. “I want to guide the vision and the strategic plan for this organization, because it has given so much to me. Now it’s time to give back.”

Welcome, Muna and LaCora, and thank you for the continued time, energy, and leadership you bring to Hope Community!

“As much as our work is our work, our lives are our work. There are layers to how we interact with one another in society, and there are also layers within ourselves and opportunities for healing and realizations of wholeness in all of this.”

*—Misha LaPlante,
SPEAC alumnus cohort 11,
Tobacco-free and Youth Activities
coordinator at the Minneapolis
American Indian Center*

Placekeeping recognizes, amplifies, and leverages stories, practices, and collective assets already found within the community...

When we think of the elements that make up a place, buildings and other physical structures often come to mind. But buildings don't tell stories, capture culture, or share joy. Hope Community has always known that people are an essential element of what makes a place *a place*. Our buildings are a critical part of our place-keeping mission—but it's the connections between people and place that make this neighborhood a place where people want to live and stay.



- With the investments Hope has made in new and existing structures in the Phillips Community, more than 750 people now live in safe, quality, affordable homes. Residents are surrounded by public art created by local people, abundant gardens cared for by neighbors, playgrounds full of children, and businesses owned and used by those who live here.

- Power of Vision Mural Project created two beautiful outdoor murals in Phillips and Whittier neighborhoods—one at St. Stephen's Human Services, and one at St. Vincent DePaul thrift store. These projects were led by Hope artists who built artistic leadership and organizing skills as part of our unique model of engaged design, listening, and creative work.

- In our community gardens, community leaders determined what they would grow, learned how to manage garden operations, and set team goals. The gardens provide space for adults and youth to gather, learn, grow, cook, and share in the abundance of

communally tended, intergenerational, and culturally centered growing spaces throughout the year.

- We piloted our Youth Food and Photography Project, an opportunity for youth ages 13-18 to research their own food stories and the food systems of South Minneapolis while documenting their learning through photography.
- We initiated a youth intern program for the community gardens, which provided stipends to three youth ages 11-13. The interns built their skills and led in the youth garden, grew food with other youth, and shared food with the community.



"For me most of all it's good therapy. You know when you have a bad day or something, you just come out here and feel the dirt. I bring my grandkids out here and let them see. I just love it. I'm still here because of Hope. Otherwise, I wouldn't have stayed in this community."

—Charlene, Garden Leader



Age Group	Male	Female
18-24	~35%	~35%
25-34	~35%	~35%



- The first year of our Teen Technology Programming surpassed our expectations with more than 300 youth participants and the support of 100 volunteers. We went beyond simply getting kids interested in STEM—science technology, engineering, and mathematics—education and instead engaged youth in producing their own creative works through STEM learning activities.
- In our listening project about the future of I-94, we held five listening sessions in three different languages. At least ninety-five community members and residents discussed the history of displacement caused by major transportation projects and the current health and environmental impacts of the nearby freeway. The group made formal recommendations to the Minnesota Department of Transportation about ways future construction can be done that avoid disparate impact.
- Four Hope youth created a song and music video, that won multiple awards at two different local and international film festivals. The video was showcased and recognized at the Twin Cities Black Film Festival, where it won

the Emerging Filmmakers of Color award. Three of our youth—Naje Wright, Martaize Smith and Latrell Mckelvy—chosen to write and act in a cause marketing campaign video for Best Buy; the piece won several awards.

- Thirty youth participated in our Girls Empowerment Movement (GEMs) and Young Men of Color (YMOC) mentorship cohorts, which have grown this year to include intensive STEM activities. The YMOC cohort presented their STEM project at a statewide conference sponsored by the “Why You?” Initiative, a mentorship program for youth of color. GEMs participants created an affirmation app to support the self-esteem of young women of color.
- Shaah Iyo Sheeko (Tea and Story) meetings built community among 77 residents and neighbors. More than 200 community members attended our third annual Iftar celebration. These gatherings are led by community stewards who serve as hosts and facilitators, inviting more people into the circle.



Placekeeping reduces indirect negative consequences of development, such as displacement and gentrification...

An important part of Hope Community's work is ensuring that people who want to be in the neighborhood can stay. Private development, public investment, and other new resources must match the needs of existing residents to maintain the spirit of place—our shared histories, narratives, identities, interests, and cultures. At Hope, leaders come together to challenge oppression and advocate for more equitable systems.



"Parks and Power can change your way of thinking. You start building a coalition with people, making connections of support. And when you build that base, it's not just about parks anymore. It's about housing. It's about disability. It's about jobs. All of us keep each other informed and keep each other going."

— Arlene Zamora, RecQuest CAC member and NE Parks and Power Leader

- Hope secured financing to begin a critical rehabilitation of 30 units of deeply affordable housing, including 25 apartment homes serving individuals who have experienced long-term homelessness, and five large family (two, three and five-bedroom) homes. These were some of the very first homes Hope ever purchased and rehabbed. This substantial reinvestment will allow Hope to keep these homes affordable for another generation of individuals and families in the neighborhood.
- Hope's Parks and Power campaign hosted two People's Assemblies, engaging 175 leaders in political education and networking for racial justice in Minneapolis parks. Later in the year, Parks and Power organized the People's Budget Rally, mobilizing more than 30 people to call on the Minneapolis Parks and Recreation Board to increase investment in youth development, contrasting the underinvestment in youth with the Board's overinvestment in policing.
- As a foundational member of the Don't Move, Fight Back coalition, Hope organized housing forums

and block parties that engaged more than 500 people in citywide conversations about displacement and anti-eviction action.

- Food justice leaders from Hope, as well as partners Northside Fresh and Waite House, worked with Minneapolis Parks and Recreation Board staff to revise and pass a community garden implementation plan that includes racial equity goals and measurement tools.
- Hope established and trained a team of 68 "internal influencers" from all levels and departments of the Minneapolis Parks and Recreation Board to facilitate an internal transformation toward racial equity.



Many stories add up

3 youth interns built leadership and gardening skills in the youth garden.

4 youth received local and international awards for STEM projects.

16 aspiring and established entrepreneurs graduated from the Plan-It entrepreneur training program at Hope, a long-standing partnership with Neighborhood Development Center.

30 Parks and Power leaders successfully advocated for the Minneapolis Parks and Recreation Board to increase investment in Youth Development.

30 youth presented group STEM projects at local leadership conferences.

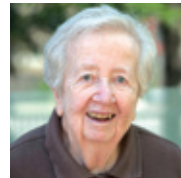
36 youth grew summer and fall crops in the gardens, from hot peppers to tomatoes to squash.

45 residents shared communal meals and distributed produce through our Harvest Sharing Days.

50 alumni returned to celebrate the 10-year anniversary and reflect on the impact of our SPEAC adult leadership program, with leaders coming from all over the country to participate.

HOPE STAFF

Top row: Betsy Sohn, Bunny Ruiz, Chaka Mkali, Char Madigan, Andrew (D-hop) Hopkins



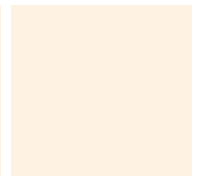
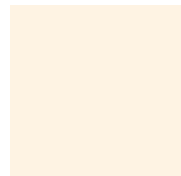
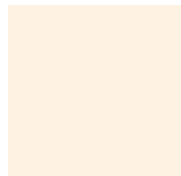
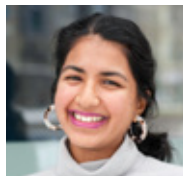
Second row: Jackie Blakey, Jake Virden, James (JT) Evans, Leilah Abdennabi, Maggy Otte



Third row: Malyun Yahye, Olivia Levins Holden, Sahkeena Mkali, Shannon Smith Jones, Shawna Fankhanel Chavez



Fourth row: Shruthi Kamisetty, Will Delaney



68 Minneapolis Park and Recreation Board staff participated in Hope racial equity and somatic experiencing trainings.

77 participants attended Shaah Iyo Sheeko gatherings, which translates to “Tea and Story”.

100 people participated in our second annual Soccer 4 Sanctuary event on July 4th at Elliott Park, sharing music, food, and solidarity.

175 leaders engaged in political education and networking for racial justice in Minneapolis parks through our People’s Assemblies.

200 people attended our third annual Iftar celebration.

300 youth joined our new Best Buy Teen Tech Center.

500 people participated in efforts to prevent eviction and displacement in Minneapolis.

3,000 people heard Naje Wright from Hope’s Teen Tech Center give the keynote speech at a Best Buy leadership forum.

6 million people viewed a video that three Hope Tech Center youth leaders wrote and starred in as part of a cause marketing campaign for Best Buy.

“What I love is that people take care of each other. There is respect here.”

—Glenda Eldridge



INTERNS, WORK STUDY STUDENTS, AND SPECIAL PROJECT STAFF

Hope recognizes the deep commitment of talented people who contributed to our work in 2018 and the partnerships that connected us to them.

Minneapolis Parks and Recreation Board Internal Guidance Team

Resmaa Menakem
Radiums Guess
Athelgra Williams
Jennifer Ringold
Adam Arvidson
Tyrize Cox
Selah Martin
Ayo Clemons
Nicole Smith
Ashley Fairbanks

Camp Readiness Facilitators

Porsha Brown
Steven Wilson
Angel Sandro

Job Readiness Facilitator

Ceadric Ashford

GEMs Facilitators

Dr. Brittany Lewis
Victoria Adofoli

Learning in Community Facilitator

Kiaria Taylor

(Why You? Initiative) – Young Men of Color Facilitator

Renaldo Blocker

C2C Pathways Facilitator

Janise Block

SPEAC Facilitator

PH Copeland

Minnesota Technical Assistance Program Intern

Emily Worman

Food Fellow

Charlene Harper

Evaluation Intern

Glenda Eldridge

Step Up Interns

Taj Buford
Naje Wright
Martaize Smith
Hanad Mohamud
Ali Browne
Isaiah Henderson

Green Zones 101 Zine Illustrators

Samie Johnson
Rachel Rolseth

Ecological Designer

Paula Westmoreland

Growing Lots Urban Farm

Taya Schulte

Food & Photography Facilitator/Free Truth Media

Ryan Stopera

Hope Photographers

Bruce Silcox
Nikki McComb

POV-Mia Photographer

Ana Taylor

Line Break Media

Nolan Morice

Land Stewardship Project

Maryam Abidinur
Eric Avery

Power of Vision Lead Muralists

Reggie LeFlore
Tori Hong
Katrina Knutson
Ebony Beck

Jourdain Muralists

Dennis WoundedShield
Ixel Debwe

Receptionists

Ryan Pearson
Kavita Thakurdial
Thomas Ly

Hope Community Financials

STATEMENT OF ACTIVITIES

For The Year Ended December 31, 2018

SUPPORT AND REVENUE

Individuals	\$ 271,305
Foundations and Corporations	897,142
Grants from Governmental Agencies	146,537
In-Kind Contributions	129,100
Grants Released from Restrictions	473,552
Temporarily Restricted Grants	223,000
Rental Income	404,555
Other Revenue	133,367
Total Support and Revenue	2,678,558

EXPENSE

Personnel Costs	1,184,567
Contracted Services	304,319
Professional Fees	99,743
Professional Development	37,763
General Supplies	56,644
Communications	29,840
Insurance	43,071
Program - Other Costs	122,497
Rental Properties	344,745
Space Rental	26,933
Loans Interest	140,303
Depreciation and Amortization	287,809

Total Expense **2,678,234**

Change in Net Assets 324

Net Assets and Equity - Beginning of Year **5,886,850**

Net Assets and Equity - End of Year **\$ 5,887,174**

STATEMENT OF FINANCIAL POSITION

December 31, 2018

ASSETS

Cash	\$ 732,140
Grants and Other Receivables	222,104
Due from Related Entities	95,157
Prepaid Expenses	14,186
Investments	667,829
Notes Receivable	3,196,275
Property and Equipment, Net	3,164,047
Construction in Progress	313,907
Other Assets	122,092

Total Assets **\$8,527,737**

LIABILITIES AND NET ASSETS AND EQUITY

Liabilities:

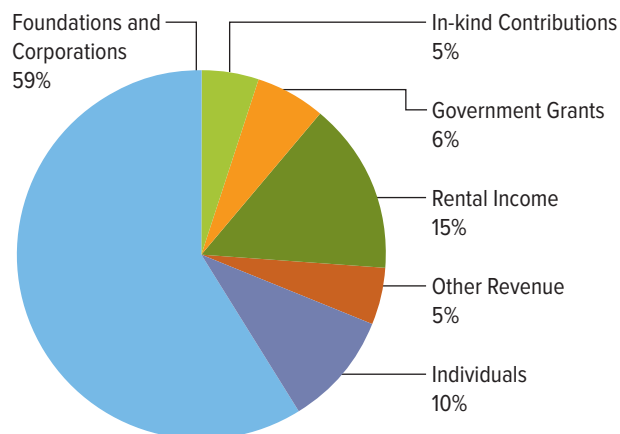
Notes Payable	\$ 40,411
Accounts Payable	159,220
Accrued Liabilities	103,873
Deposits Held for Others	72,806
Long-Term Debt	2,264,253
Total Liabilities	2,640,563

Net Assets and Equity:

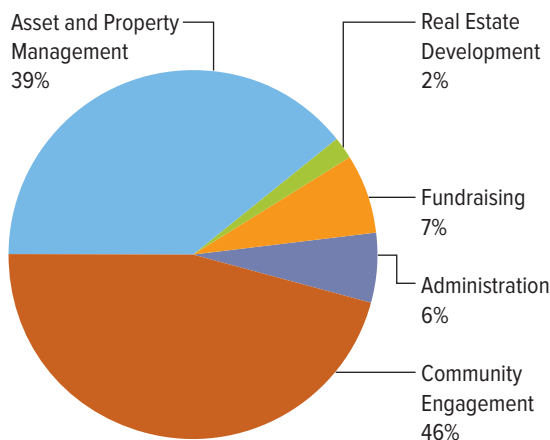
Unrestricted	5,377,341
Temporarily Restricted	395,833
Permanently Restricted	114,000
Total Net Assets and Equity	5,887,174

Total Liabilities and Net Assets and Equity **\$8,527,737**

SUPPORT AND REVENUE



EXPENSE



Mission

Hope Community creates connections that strengthen the power of community members and communities. We cultivate community leaders, build community capacity, care for the housing and community spaces we develop, and pursue equity and diversity in all we do.



Operating Principles

We believe that community engagement and real estate development are integral components of community development.

We develop both formal and informal partnerships to advance our mission.

We design our work to strengthen multi-cultural and economically diverse community involvement and leadership, to respect different cultural perspectives, and to challenge racism.

We reflect our strong endorsement of the leadership and power of people of color in our board and staff composition and advancement policies and practices.

Core Values

Respect. We believe in people. We relate to youth and adults as people, not clients.

Connection. We build relationships, the cornerstone of all our work.

Listening. We listen to all who engage with us. The realities we hear drive our planning and activities.

Learning. We incorporate reflection and evaluation in all our work and learn from our experiences.

Co-creation. We encourage people to co-create projects, programs, places, opportunities—with us.

Equity. We pursue racial and economic equity in all our work to achieve equitable power, access, opportunities, treatment, impacts and outcomes for all.

Stewardship. We are responsible and accountable stewards of the natural, human, material and community resources invested in our work.

We operate organically, intentionally, and flexibly and strive to be accountable, transparent, and authentic in all we do.

We recognize that courageous and respectful agitation is sometimes necessary to achieve change.

We appreciate courage, humility, patience, hope, and humor, which help make our work possible and sustainable.

Volunteers and in-kind donations

A dedicated team of Hope staff and 202 volunteers are part of a continuum of opportunities that keep people engaged, inspired, and rooted in community. We honor the contributions and impact Hope's volunteers have had on our success this year. In 2018, our volunteers' work totaled 2,588 hours.

VOLUNTEERS

YOUTH ENGAGEMENT

Irina Abasova
Salma Ahmed
Tajudin Aliy
Max Barber
Alexander Beaudin
Jackson Bernards
Brett Carr
Daanis Chosa
Erin Crowley
Emily Duesenberg
Madison Eacret
Logan Eckhoff
Matthew Erkenbrack
William Evans
Anastasia Evgrafova
Kathleen Feuall
Mai Houa Hang
Maria Holland
Holly Huebner
Kania Johnson
Emily Keis
Brooke Kerscher
Kristin Lentz
Zhiwei Liu
Katelyn McEnelly
Casey McNichols
Azahar Mohamed

Julia Moturi
Kaitlin Nims
Paige Pickens
Laura Schulz
Crisna Seng
Kailee Sharp
Alexander Stanisic
Pachia Thao
Elise Tran
Anneliese Ward
Rachel Wickie
Mai Xiong
Linda Yang

TEEN TECH CENTER

Harry Sattler
Melana Bell
Robert Woods
Shaiwna Adams
Armani Wade
Alvontae Dillard-Turner
Raphael Jones
Calvin White
Jonathan Clemons
Colleen Bell
Andrew Bork
Rebecca Martinez
Sarah Trembly
Anthony Jennifer
James Ittner

Scott Conyer
Robert Karlya
Andrew Miller
Shawn Lundin
Lewis Smith
Nathan Bauer
Brij Madaan
Anthony Kline
John Dahlquist
Cynthia Lewis
Rachel Springer
Erica Lee
Kenadid Hiss
Jameer Anderson
Akilah Blakey
William Woodworth
Brandi Jorgensen
Stacy Pratt
Alecia Hodge
Noelle St. Andrew
Christine Radzak
Sarah Hernandez
Sarah Wallis
Lynn Slone
Michelle Mcleland
Sean Fetterman
Andrea Vetterkind
Mellissa Kollasch
Kendra Curry
Christopher Wonderly

Madissen Delaney
Alison Lawler
Olivia Demeuse
Austin Burandt
James Mc lean
Derek Willems
John Carulo
Ellen Roth
Andrea Hovel
Kristine Jegepe
Anna Sandquist
Mike Snell
Ian Boumen
Renae Bonin
Kevin Liu
Keith Wilkins
Pete McGovern
Molly Cashman
Riely Jines
Ryan Bernhagen
Brian Mapp
Marcus Rupert
Lori Skallerud
Bill Skallerud
Myra Grady
Monica Diaz
Megan Ehora
Rachel Csintyan
Jenny Sincavage
Lori Selman
Mary Thomas
Samia Young
Andres Gomez
Chad Carlisle
Sarah Johnson
Alex Gibbs
Tiffany West
CJ O'Connor
Kadryn McPherson
Hannah Milligan
Jonathan Campbell
John Holliman
Yobert Ramirez
Jessica Ayivor
Greg Dinert

Ricky Noriega
Sam Gabbard
Andrea Riehl
Will Woodworth
Justen Bristlin
Isabella Kemling
Izzie Mack
Isadora Korak
Ava Kian
Ryan Munthe
Melinda Emerson
Lauren Podratz
Frederick Beecher
Roy Beets
Shari Younger
Spencer Hanton
Alice Meredith
Jason Yanez
Wade Trapp
Jacob Hustvet
Stacy Fisher
Shahroz Eslani
Lindsay Bessard
Katie Kremmin
James McLean
Emily Leighninger
Stephanie Eckardt
Lianna Sanders
Vachone Hall
Justin Bristlin
Isabel Tompkins
Peter McGovern
Michael Snell

FOOD, LAND AND COMMUNITY

Joe Banks
Glenda Eldridge
Decourcy Squire
Charlene Harper
Rosa Quezhpilema
Tori Penny
Rosalee Hass
Dhuuh Yahye
Bisharo Jama

Muhubo Hassam
Amina Ahmed
Bianca Franks
Bonita Watkins
Mary Dalsin
Pam McMurry
Santiago Lopez
Stafford Lipscomb
Robert Pierce
Muna Ali

SHAAH IYO SHEEKO

Tom Corcoran
Quantina Beck Jones
Ann Gilbert
Bonita Watkins
Miski Abdulle
Ifrah Warsame
Ebony Beck Jones

PARKS AND POWER

Selam Tilahun
Lea Rimpell
Molly Glasgow
Caspian Wirth
Alicia Johnson
Ileana Mejia
Arlene Zamora
Chava Gabrielle
Akim Anderson
Misha LaPlante
Fen Griffen
Levi Weinhausen



IN KIND DONORS

In the past year Hope has received generous donations of goods and services that support our organization. In Kind donations vary from plants and flowers to beautify our neighborhood, to professional services to support our staff. One thing that doesn't vary is how much we appreciate them.

Best Buy Foundation Costco
Seward Co-op The Wedge Co-op

Hope Community Donors

With deepest gratitude we thank our donors for believing in possibility. Because of you, a neighborhood once in despair is renewing and a strong community is growing. We honor you—our friends and partners. If you are one of our supporters and you do not see your name on our list, please contact Sahkeena Mkali at (612) 435-1695 or smkali@hope-community.org.

Helen Bushnell-Delaney
and Thomas Delaney
Bob Devereaux
Cathy Dolan and Dan O'Brien
Patrick Dougherty
Richard Doyle
Peter Farstad and Paul Mellblom
Jay and Sandy Fetyko
LaVon and Charlie Fisher
John and Patricia Gries
Tom and Gretchen Griffin
Carmen Gugin
Germaine Hall
Lucy Hartwell
Brian and Sandi Hoffman

Thomas and Virginia Stillwell
John Tamminen
Carol Tauer
Thomson Reuters Matching Gift
Program
Jeff and Noelle Turner
US Bank
Western Bank, a Division of
American National Bank
Chris and Sharon Widstrom
Otto C. Winzen Charitable Fund
of the Catholic Community
Foundation
Dave Wood
Pat Wuest

\$25,000 OR MORE

Best Buy Foundation
Patrick and Aimee Butler Family
Foundation
The Clubhouse Network
Graves Foundation
Greater Twin Cities United Way
Emma B. Howe Memorial Foundation
of The Minneapolis Foundation
The McKnight Foundation
Nexus Community Partners
Otto Bremer Trust
Peregrine Capital Management, LLC
of The Minneapolis Foundation
Richard M. Schulze Family
Foundation
Target Foundation

\$10,000-\$24,999

Ahmann Family Foundation
An Anonymous Fund
of The Minneapolis Foundation
Keith and Mary Bednarowski
Gilligan Foundation
Pohlad Family Foundation
Sexton Foundation
The Sheltering Arms Foundation
Sisters of St. Joseph of Carondelet,
St. Paul Province
Twin Cities Local Initiatives Support
Corporation, LISC
Paul and Betsy Von Kuster



\$5,000-\$9,999

Allina Health
Anonymous
Catholic Campaign for Human
Development
Mary and Charles Jungmann

Kopp Family Foundation
R.C. Lilly Foundation Fund
Metropolitan Regional Arts Council
Pat Mullen
Karen Orren
Mary and Mike Samuels
Nicholas Stevens
University of St. Thomas Gibney
Student Board,
funded by Jackie Gibney
Allen and Diane Volkenant
Weck Charitable Trust

\$1,000-\$4,999

Anonymous
Anne Barry
Burdick Family Fund of
The Minneapolis Foundation
Ann Calvert
Mildred Cashman
The Ceronky Krietemeyer
Charitable Giving Fund from
Vanguard Charitable
Children's Hospitals and Clinics
of Minnesota
Patricia Cummings
Mollie Dean

HRK Foundation
Jeff Huggett and Diane Lindquist
Mary Lee Kabes
Tim and Suzanne Lauer
Mary Gerry and Tom Lee
Paul and Jeanne Leighton
Margaret and Richard Lidstad
Anne and Sam Mackintosh
Andy and Jessica Madigan
William McDonald and Virginia
Claessens McDonald
CSJ Consociate
James Miles
Beverly Miller
Marilee and John Miller
Monitors Foundation
Robert and Flora O'Hagan
Marge and James O'Hara
Rita and Ben Olk
Judy and Gene Probst
Herman and Therese Ratelle
Foundation
Katherine Schneider
Susan Sherek
Jeanne and Rick Specht
Joyce St. John

\$500-\$999

Anonymous
Tracy and Luke Babler
Robert and Judith Brezinski
Marilyn Broussard
Dr. Thomas C. and Anne D. Carrier
Carolyn Chalmers and Eric Janus
Claire Chang and David Kippen
Barbara DeCosse
Joan deMeurisse
Mary Dorn
Kaywin Feldman
Flannery Construction
Elizabeth Gleisner
Gregerson Family Fund
at Fidelity Charitable
Patty Herje
Clint Hewitt
Robert and Patricia Huberty
Jody and Craig Jonas
Kenneth D. and Barbara K. Larson
Fund of The Minneapolis
Foundation
Stacy Lindstedt
Richard and Jean Lynch Fund of the
Catholic Community Foundation

Dan and Julie Madigan
 Betty Maetzold
 Gerald A. Meigs
 Chet and Miriam Meyers
 Pat Muyres and Jack Barnes
 Dave Newman
 Jeffrey Duane Olson
 Nancy Parlin CSJ Consociate
 Chris Plum
 Richard G. and Dorothy E. Revord
 Family Charitable Fund of the
 Catholic Community Foundation
 Annie Riley and Roy Otto
 Eric G. Rodgers Giving Fund
 at Fidelity Charitable
 Melanie Ruda and
 Kathleen McDonough
 Beth Ryan



Mary Schell
 Mary Frances Schurb
 David and Ruth Shriver
 Chuck Siggerud
 Chanda Smith Baker Family Fund of
 The Minneapolis Foundation
 Mary Jane Steinhagen and
 Bob Veitch
 Marilee and Terry Stevens
 Deb and Paul Stoll
 Bob and Maura Tschida
 Penny Winton
 Susan Woolard
 Hana Worku

UNDER \$500

Andriana Abariotes
 Russ Adams
 Mary Ann Adrian
 Peggy Angvik Ammann
 Nettie Andrews
 Anonymous
 Barbara Arrell
 Nan and Jim Ayers
 Heidi Lasley Barajas
 Donna Barbour-Talley
 Mark Barrett
 Gigi Barry
 Gloria Barry
 Delmar and Kathleen Becker
 Clint and Sara Beckstrand
 Cecile Bedor

Joan M. Bennett
 Cathy Bergland
 Paul and Margaret Berrisford
 Cathy and Jim Bertucci
 Bill and Carol Beste
 Bethany Convent
 Kathy Bieker
 Don and JoAnn Bilunas
 James and Lisa Leitner Bloomquist
 Andrew Bocher
 Margie Bodas
 Glen and Peggy Booth
 Catherine Bosworth and
 Martha Hamlin
 Dylan and LaCora Bradford-Kesti
 John F. Brandes
 Jeffrey Brede
 Judy Brick
 Maura Brown
 Karen Bruce
 Mary Kay Buskin
 Joann M. Buysse
 Marge Byers
 Patricia Callaghan
 Patricia Caponi
 Elsa Carpenter
 Kathleen Casey
 Margaret Anne Casey
 Charities Aid Foundation of America
 Thomas and Nancy Chisholm
 Church of St. Mark Council
 of Catholic Women
 Patrick and Patricia Conley
 Allen and Rita Corcoran
 Nancy Cosgriff
 Tammy Cowan
 Michael and Ronnie Cromett
 George Dingman
 Marilyn Dondelinger
 Mary Doyle and Megan Morrissey
 Pat Connolly Durkin
 John H. Edberg
 Louise Eidsmoe
 Mandy Ellerton
 Mike and Debbie Elliot
 Linda L. Engberg
 Kristen and Adam Estvold
 Jerry R Evans
 Mary Ellen Evans
 Stephen Fautsch and
 RSP Architects, Ltd.
 Ethan Fawley
 Karen Felt
 Elizabeth Felbeck
 Tracy Fischman
 Mavis Fisher
 Sharon Fitzgerald
 Barb Fitzpatrick
 Ed Flahavan and Susan O'Leary
 Rose and Frank Fondell
 Rita Foster and Char Madigan CSJ
 Ronald Fraboni
 Julia Freeman
 Maggie Hessian Gatz and
 Robert Gatz
 Thomas and Barbara Geheren
 Kathryn Gerber
 Ann Gilbert and Dan Pederson
 Giving Assistant, Inc.
 Sig Glasoe

Kenneth and Mary Gleason
 Barbara G. Godfrey
 Rosalie Greeman and
 Ron Scherman
 Willie Gregg
 Marie and Agatha Grossman CSJ
 Alaina Hagen and Kathleen Jesme
 Jean and Larry Haider
 Mary Ellen Halverson
 Gary and Paula Hanson
 Peggy Hanson
 Garry Hart
 John and Terri Hawthorne
 Agnes Hoeger
 Karen Hoistad
 Colleen and Glenn Hokenson
 Andrew Hopkins
 Janet B. Humphrey
 Rachel Imholte and John Yeamen
 John Jackson
 Cecelia Jennewein
 Barbara Jobst
 Joan M. Johnson and
 Steve McKeown
 Josie Johnson
 James R. Jones Jr.
 Shannon Jones
 Judy Jungwirth
 Ellen Just
 Ann Kapaun
 Alfred J. Kauth Jr.
 Barbara Keeler
 Francis and Roberta Kenney
 Eugene and Betty Kent
 John Keyes and Kathleen Lawless
 Seonho Kim
 Lorena Klinnert
 Richard Knowles
 Bernard and Marcia Koalska
 Giles Kobilka
 Cynthia and Larry Koehler
 Mary Kohls
 John and Richelle Koller
 Adam Kowles
 Cynthia and Tom Kraack
 Keith and Lisa Kupcho
 Jim Lammers and Sheryl Martinson
 Kathleen Laughlin
 Tony Lemaire
 Gayle Lens
 Margitta Lindberg and Mike Hansel
 Jacqueline Lindskoog
 Theresa Lippert and Fred Grittner
 Barbara E. Little
 Marlene Locascio
 Rita Mach
 Joan Madden M.D.
 Dick Madigan
 James and Judith Madigan
 Jeanne Madigan
 Judy Madigan CSJ
 Michele Madigan
 Catherine Mamer
 Dave Mann
 Katie and Benjie Mann
 Judy Mannella
 Laura Matanah
 DonaMari Mayer
 Barb McCormick
 Brigid McDonald CSJ





Dick and Joyce H. McFarland
Family Fund of The Minneapolis
Foundation
Michele McGraw and Tony Dodge
James McGuire
Mary Ann McGuire
Susanne McGuire
Tom and Susan McGuire
Kathleen M. McKay Donor Fund
at Schwab Charitable
Mary and Dave McKell
Kathie McLaughlin and
Kay Egan CSJ
Maria McLemore and
Alexander Hines
Sean and Carol McNamara
Toni McNaron
Marie and Joe Medvec
Greg Meidt
Joan and Richard Meierotto
Bob and Lorraine Melcher
The Stephen and Mary Melcher
Charitable Gift Fund
of the Bank of America
Charitable Gift Fund
Jim and Diana Merkl
Merten Campion Family Fund at
Schwab Charitable Fund
James and Colleen Michels
Catherine and Dennis Moore
Alice Moormann
Mary Alice Muellerleile
Richard Mullenbach
Donna Murphy
Michele Murphy CSJ
Cassandra Neff
Mary Negri
Carol Nelson
Dan and Kayla Nelson
Jessica E. Nickrand
Mary and Denis Novak
Sean O'Brien
Bonnie O'Connor and
Ron Hopfensperger
Colleen O'Malley, CSJ and
Jane McDonald, CSJ
Mary Ann O'Reilly
Ruth and David Olkon
Olympus
Maria Caridad Pabon Gautier
Joseph and Stephanie Palen
Jeanne Peltier
Cherie R. Perlmutter
John and Susanne Peterson
Mary and Tim Pieh
Marlene Pinten
Bernie and Jim Prokop
Carolyn Puccio CSJ
Gladys M. Randle
Patrick and Debby Reisinger
Gary and Nancy Renneke
Brigid Riley
Peter & Mary Ritten
Rosie Romportl
Adele Marie Rothan, CSJ
Michael D. Rowe
Harvey Rucker
Stephen and Ann Russell
Judy Sausen
Judy and William McCartin Scheide

Marilyn Schlosser, OP
Phil and Mary Margaret Schmidt
Ellen Schuller
Katy Schultz
Brockman Schumacher
Virginia Schuster
Joseph and Mary Ann Schwebel
Susan and Jackson Sell
Eliza and Sean Severson
Mary and John Severson
John Seymour-Anderson
Stephen and Rachel Shapiro
Martha Sheppard
Therese Sherlock and
Joan Mitchell CSJ
Elizabeth Shippee
Margaret Siltberg
Ruby Alice Simmons
Wayne and Jayne Simoneau
Angie Singer
Susan Singer
Vincent M. Skemp and
Dierdre Brennan
Janet Skrypek
Rev. Stanley V. Sledz
Kathryn and Earl Smith
Roxanne and Gerald Smith
Betsy Sohn
Jane Soshnik
Mary Speltz
Alice Stang
Florence Steichen CSJ
Nancy and Jerry Stermer
Judith and Oliver Stocker
Carol Summers
David J. Sutton Gift Fund
at Fidelity Charitable
Paul and Carrie Tatro
Rose Teng Scheckman
Nancy Tennesen
Diane Traxler and Bill Morris
Dolores Voorhees
Donald and Jane Weinstein
Richard and Sandra Westby
Darlene and Thomas White
Wendy Wiegmann and
Cathy Heying
Gretchen Willging and
Kostis Papadantonakis
Ronald Wilson and Arthur Stoeberl
Tom and Jean Wojcik
Roy and Judy Wolff
Kenneth and Terri Wong
Xcel Energy Foundation
Matching Program
Diane Yohn
Louise Ziegler
Robert and Judith Zier
Jackie and Steve Zimmerman

Hope Community Keepers

The Keepers are Hope Community donors who have made a commitment to leave a legacy to our organization. They are supporters of Hope Community's work and vision, standing with us for many years. Keepers are visionaries who committed to keeping Hope Community moving into the future. For more information about becoming a Keeper or other Planned Giving options, please contact Sahkeena Mkali at (612) 435-1695 or smkali@hope-community.org.

KEEPERS

Mary Ann Adrian	John Mason *
Anonymous	William McDonald and Virginia Claessens McDonald
Maggie Arzdorf-Schubbe	CSJ Consociate
Jennifer Britton	Florence and Jack McHugh *
Ann Calvert	Joan and Richard Meierotto
Margaret Anne Casey	Mary and Herb Montgomery *
Nancy Cosgriff	Nina Polcyn Moore *
Robert J. and Marilyn * Devereaux	Marian Mulcare *
Peter Farstad and Paul Mellblom	Pat Mullen
Sharon Fitzgerald	Richard Mullenbach
Peter and Carole Fleming	Mary Lou and Gene * Ott
CSJ Consociate	Nancy Parlin CSJ Consociate
Margaret M. Fogarty *	Jeanne Peltier
Marie Fourre-Russ	J. Timothy Power *
CSJ Consociate *	Kitty Sather
Virginia Gaffrey and Bob Murphy	Ellen Mary Saul
Peter and Dortha Gilligan *	Mary Schell
Sig Glasoe	Mary Frances Schurb
Elizabeth Gleisner	Jennie S. Seaton *
Carmen Gugin	Joyce St. John
Melanie Haddox *	Bill Stanton *
Sally and Raymond Haik	Mary Jane Steinhagen and Bob Veitch
Janet B. Humphrey	Mary Stermer *
Margaret and Bill Hunt	Fay Sullivan
Amy and Kevin Kluesner	Carol Tauer
John and Richelle Koller	Helen and Mario Vanni
Kenneth and Barbara Larson	Phyllis Wagner *
Tim and Suzanne Lauer	Yvonne Wagner *
Margaret and Richard Lidstad	Darlene and Thomas White
Catherine and Peter Lupori *	Dolores Williams *
Anne and Sam Mackintosh	Dave Wood
Jeanne Madigan	Wilfred Zalaznik *
Maureen Mashek CSJ Consociate	

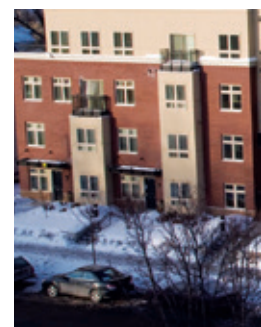
Hope Community Sustainers

The Sustainers are Hope Community donors who give monthly or quarterly to ensure stability and growth. These donors provide a steady flow of funds throughout the year, allowing Hope to provide the same level of high quality programming and affordable housing that is expected. For more information about becoming a Sustainer, please contact Sahkeena Mkali at (612) 435-1695 or smkali@hope-community.org.

SUSTAINERS

Peggy Angvik Ammann	Patrick and Debby Reisinger
Anonymous	Beth Ryan
Anne Barry	Eliza and Sean Severson
Jackie and Jerry Blakey	David and Ruth Shriver
Dylan and LaCora Bradford-Kesti	Ruby Alice Simmons
Ann Calvert	Betsy Sohn
Margaret Anne Casey	Joyce St. John
Patricia Cummings	Mary Jane Steinhagen and Bob Veitch
Mollie Dean	Diane Traxler and Bill Morris
Barbara DeCosse	Bob and Maura Tschida
Cathy Dolan and Dan O'Brien	Dolores Voorhees
Patrick Dougherty	Donald and Jane Weinstein
Shawna Fankhanel Chavez	
Rita Foster and Char Madigan CSJ	
Rosalie Greeman and Ron Scherman	
Tom and Gretchen Griffin	
Garry Hart	
Patty Herje	
Shannon Jones	
Seonho Kim	
Paul and Jeanne Leighton	
Theresa Lippert and Fred Grittner	
Anne and Sam Mackintosh	
Joan and Richard Meierotto	
Sahkeena Mkali	
Pat Mullen	
Cassandra Neff	
Dave Newman	
Jessica E. Nickrand	
Mary Ann O'Reilley	
Jeffrey Duane Olson	

*With special recognition to our Keepers, who in 2018, after their passing, left a legacy for our work with Gifts a Keepers of Hope.



Honorariums

Hope has received many gifts given in honor of birthdays, weddings, anniversaries, graduations, and simply for someone's amazing presence in the world

IN HONOR OF

Rachel Estvold
Deanna Foster
Jim Fournier
Clint Hewitt
Hope Cats
Hope Community Staff and Board
Hope Staff
Mary Keefe

Paul Leighton
Paul and Jeanne Leighton
Char Madigan
DonaMari Mayer
Chaka Mkali
Sahkeena Mkali
Bill and Betty Ryan
Vernon Schaefer

Memorials

Donors made gifts to Hope in memory of the people they have loved and who have held an important place in their lives. We thank all of you who gave.

IN MEMORY OF

Doris Applequist
Jim C. Boos
John Braun
Ann B. Callaghan
Anna Caponi
Alice deMeurisse
Marilyn Devereaux
Marian Dingman
Clare Doyle
Marcy Erickson
Frank Fondell
Marie and Dean Foster
Rose Mary Gerlach
Ned Gibbs
Paul and Virginia Glasoe
Bert Hasbrouck
Alice Helgeson
Lawrence Helgeson
Ray Herje
Glenn Johnson
Jack Koalska
Mary J. Kobilka
Eugene and Vivian Leitner
Eileen Lund
Adele and Ed Madigan

Joe & Marie and
Ed & Adele Madigan
Benjie Mann
Dave Mayer
Con and Dorothy McNamara
Maddie Morrissey
Cheryl Mullenbach
Sue Neisen
John Nelson
Suzanne Nystrom
Sister Gerry O'Meara OP
Ann Redmond
David Schneider
Jeannine Siggerud
Don Siltberg
Frank Singer
Rita Steinhagen
Mary Stermer
Fay Sullivan
Ginny Sullivan
Joseph and Paul Summers
Edith Tauer
Dorothy Tomczyk
Edwin W. Toms
Dorothy Widstrom
Eugene Widstrom
Jean Widstrom

HOPE BOARD

Muna Abdirahman,
Co-chair*
VA Medical Center,
SPEAC graduate

Shannon Smith Jones*
Executive Director,
Hope Community,
SPEAC graduate

Heidi Lasley Barajas
University of Minnesota

Paul Leighton
Cordis Financial

Anne Barry
Saint Paul-Ramsey
County Public Health
Department

Maria Pabón Gautier
St. Olaf College

Brockman Schumacher,
Secretary*
Licensed Psychologist

Steve Shapiro
Communications
consultant

Cecile Bedor
Greater MSP

Janette Law
Minneapolis Parks
Foundation

LaCora Bradford-Kesti,
Co-chair*
Corporation for
Community and National
Service, SPEAC graduate

Catherine Smith
B.L. Dalsin Roofing

Claire Chang
Blue Cross Blue Shield
Foundation of MN

Sharon Sayles Belton
Thomson Reuters,
Former Mayor
of Minneapolis

Dan McClean,
Treasurer*
Vesique

Clint Hewitt*
Retired, University
of Minnesota

Kia Hakimi
Best Buy

* Executive Committee





Hope Community
611 East Franklin Avenue
Minneapolis MN 55404

Nonprofit org.
U.S. Postage
Paid
Twin Cities, MN
Permit No. 1961

- Facebook: @HopeCommunityInc
- Twitter: @Hope_MN
- Instagram: @HopeCommunity_MN
- SnapChat: @HopeCommunity
- Website: hope-community.org

Teen Technology and Youth Engagement

- Facebook: @HopeYouthProgramsMN
- Instagram: @hopeyouthprograms
- YouTube: @ Hope Youth Programs

Parks and Power

- Facebook: @parksandpower
- Instagram: @parksandpower
- Twitter: @ParksAndPower

Food, Land and Community

- Facebook: @FoodLandAndCommunity
- Instagram: @foodlandandcommunity

Power of Vision

- Blog: powerofvision.art/

Shaah Iyo Sheeko

- Facebook: @ShaahIyoSheeko

All photos taken by Bruce Silcox and Ryan Stopera

Copywriting by Tracy Babler

Graphic design by Triangle Park Creative

©2019 Hope Community

